

# Shotley Community Primary School

Shotley, Ipswich, IP9 1NR

☎ Telephone: 01473 787255

✉ E-mail [ad.shotley.p@talk21.com](mailto:ad.shotley.p@talk21.com)

☎ Fax: 01473 788788

Headteacher: Mrs. Melanie Newman



October 2007

Dear Parents,

## Harvest Thanks



Thanks to all of you who contributed food goods for our Harvest Festival in September. We had an amazing amount of food, which St Mary's Church took to the women's refuge in Ipswich. They were extremely grateful for the gifts and have sent their thanks to you all.

Our Harvest Service was held at school in the end, as the weather was so wet. Wendy Sadler 'officiated', and the children put on a beautiful service of thanks for the harvest.

## Crèche Ideas

Some parents have asked if it would be possible for crèche facilities to be available during parents' assemblies / services at school. We are happy to find the room for this, if we can have a 'pool' of parents who are happy to run the crèche voluntarily. It would certainly benefit the children in school, as they would not have to battle above the noise of enthusiastic toddlers. If you are interested in donating time and expertise, please contact me at school.



## Headlice

Headlice are raising their ugly heads again - as they do in all school communities. I encourage you to check your family's hair regularly - including your own - and use a fine-toothed comb with conditioner at least once a week as a matter of course. It might seem laborious, but it does work! After nearly 20 years of teaching, I've only had headlice three times and my husband (also a teacher), none.

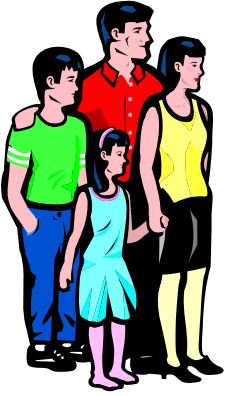
There is also a website for parents, giving advice and support:

[www.onceaweektakeapeek.com](http://www.onceaweektakeapeek.com) or [www.thorntonross.com/oawtap/Default.aspx](http://www.thorntonross.com/oawtap/Default.aspx)

## Late to School

If you are bringing a child to school late, for example if they have had a doctor's appointment, please make sure that they are registered at the office. Thank you.





### PFA

As most of you are now aware, the PFA have been successful in recruiting a new committee and a new Chair, Mrs Vicky Durrant and secretary, Mrs Dina Bedwell. If you are interested in joining the PFA or helping at events, please do contact any member of the PFA or the school office.

Our thanks go to the retiring committee and their Chair, Mrs Celia Wallhead, for all their hard work and efforts in raising funds for our outdoor shelter.

The outdoor shelter has hit a few 'snags', which is why we have not, as yet, had our opening ceremony. The shelter is up, and looking fabulous, but there are a few details to be resolved by the company that provided it. We are hoping to arrange the opening ceremony early on next half term.

### Autumn Disco

The Autumn Disco is on Friday 2<sup>nd</sup> November from 6.30pm. See posters for details.



### Request from Mrs Packard!

Gill Packard has asked that if anyone has any redundant wellies (size 9 - size 12ish), raincoats/cagoules suitable for 4/5 year olds or any old artificial Christmas trees, and they would like to donate to her class, she would be extremely grateful!

### Tesco and Sainsbury Tokens

Many thanks to all of you for collecting tokens for us. With the Tesco tokens this year, we have 'bought' a digital camera and a special computerised viewer; with the Sainsbury tokens, we have 'bought' a variety of balls and equipment for badminton, including a net.



### Dates for your diary

29 <sup>th</sup> October	<b>Return to school</b>
2 <sup>nd</sup> November	PFA Autumn Disco
9 <sup>th</sup> November	10.30am Remembrance Service at Church (to be confirmed)
16 <sup>th</sup> November	Children in Need activities
30 <sup>th</sup> November	PFA Christmas Bazaar
13 <sup>th</sup> December	6pm Christmas Performance (to be confirmed)
14 <sup>th</sup> December	9am Christmas Performance (to be confirmed)
19 <sup>th</sup> December	2.30pm Christmas Carols and songs
	<b>End of Term</b>

Yours sincerely,

Melanie Newman